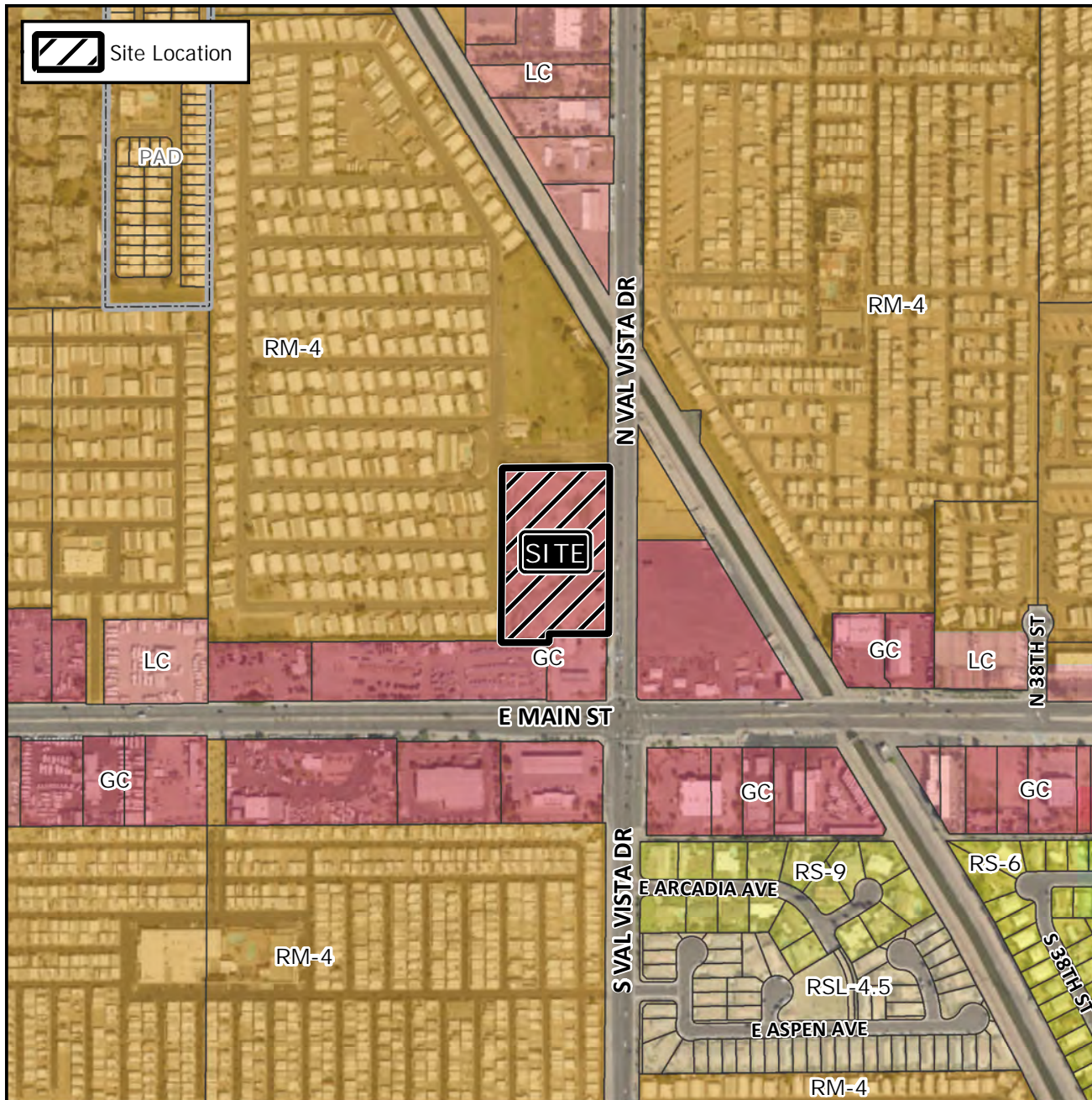


# Design Review Vicinity Map: DRB20-00105

## Case Details



Case:

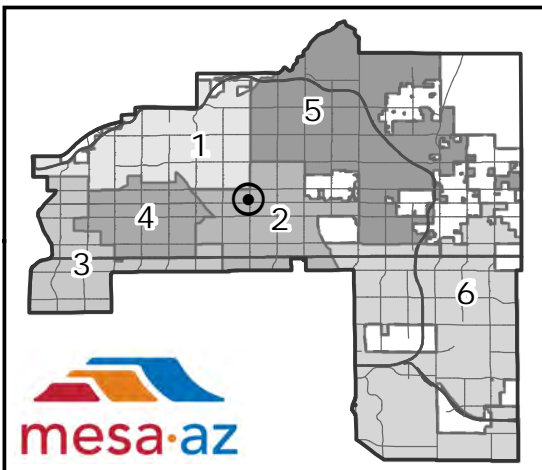
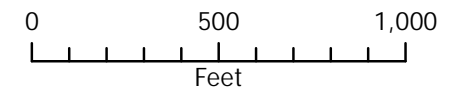
DRB20-00105

Site / Address:

District 2. Within the 0 to 200 blocks of North Val Vista Drive (west side)

Request:

Requesting the review of a self-storage facility





## **Project Narrative**

Proposed Climate Controlled Self-Storage & RV/Boat Storage Project

Address: 104 N. Val Vista Dr., Mesa, Az 85213

Parcels: 140-21-004K, N

---

We are proposing the development of a new Climate Controlled Self-Storage Facility with outdoor covered RV & Boat Storage on the West side of Val Vista Dr. North of Main St. in Mesa, Az. The site is presently vacant land with two small billboards for advertising. Our intention is to have the billboards removed and construct the new improvements.

The finished structure will be similar in design and construction to the building located at 457 S. Higley Rd., Mesa, Az 85206. There will be approximately 280-300 storage units, which will vary in size from 25 to 300 square feet and a 900 square foot leasing office. Additionally, there will be between 60-70 on-site RV and Boat covered storage spaces ranging in size from 360 to 600 square feet each.

The site is bordered to the South by both a Circle K and Trailer Sales business, both zoned General Commercial. To the East, across Val Vista Drive, are two parcels, one zoned General Commercial and the other zoned RM-4 but is actually being used as a utility substation. To the North and West is the Highlands at Brentwood Trailer Park zoned RM-4. Both the North and West boundaries are currently buffered by a road and landscape with tall oleanders in the Highlands at Brentwood community.

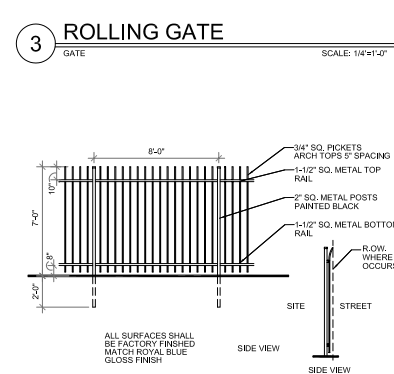
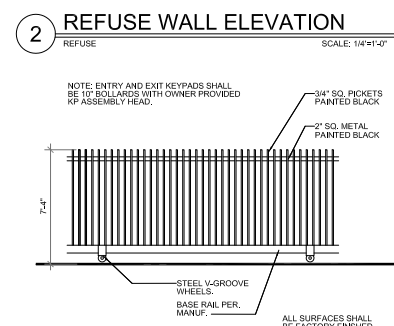
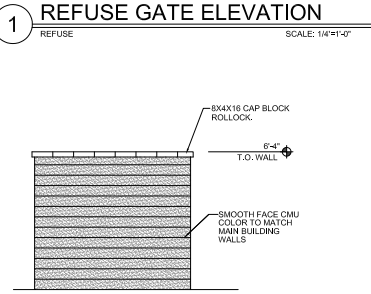
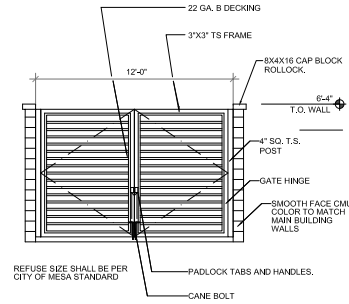
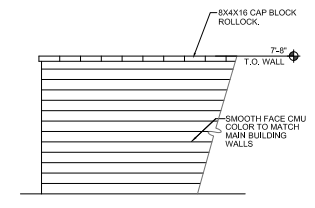
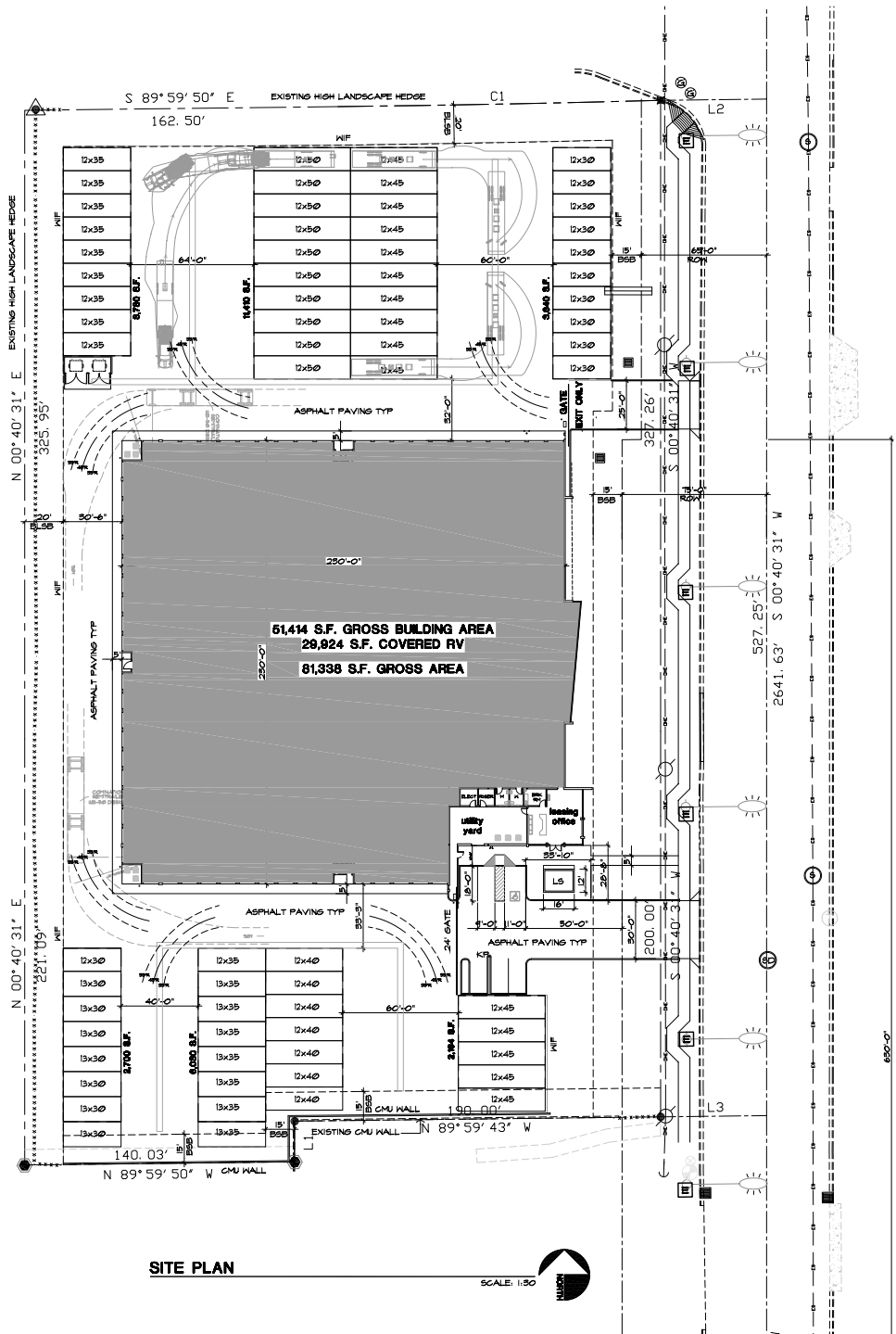
There will be two 30 foot wide entrance/exit drives to the property through rolling security gates. The South drive is for entry and exit traffic while the North drive is solely for exit traffic. We are proposing 6 parking spaces with two handicap stalls per Table 11-32-3.A Mini Storage. Landscape Setbacks are proposed to be 20 feet on the North and West, and 15 feet on the South. All drive surfaces will be asphalt paving.

The building design will be contemporary with a material pallet consisting of corrugated, b-deck, and louver wall panels, galvalume standing seam metal roofing, and various sizes of masonry block wall accents. Main building heights are minimal with a top of wall of 9'-4" and a roof ridge height of less than 16'. Office has a top parapet height under 20'.

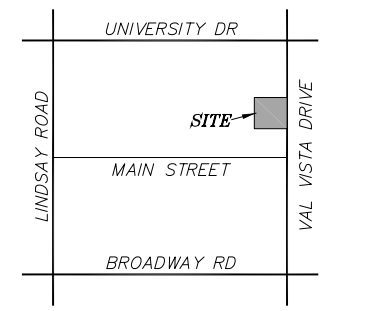
Included with this narrative are copies of the proposed site, landscape, preliminary grading and drainage, elevation, and floor plans.

Respectfully,

Nathan Palmer, Manager  
Intelliguard Group, LLC  
480-522-7898



**SITE DATA**  
VAL VISTA STORAGE  
PROJECT ADDRESS:  
104 NORTH VAL VISTA DRIVE  
MESA, ARIZONA 85213  
APN: 140-21-0048 & 140-21-0049  
ZONING: GC  
OWNER:  
INTELLIGUARD GROUP LLC  
104 NORTH VAL VISTA DRIVE  
MESA, ARIZONA 85213  
SITE AREAS  
GROSS SITE AREA PER SURVEY = 176,784 S.F. = 4.058 ACRE  
NET SITE AREA = 167,804 S.F. = 3.8522 ACRE  
BUILDING COVERAGE = 81,338/167,804 = 48.4%  
LOT COVERAGE = 134,182/167,804 = 79.9%  
USE GROUP = S-1 SELF-STORAGE FACILITY  
CONSTRUCTION TYPE II-B (AUTOMATIC SPRINKLER SYSTEM)  
ALLOWABLE AREA INCREASE 2012 IBC TABLE 503  
17,500 S.F. = (17,500 S.F. X 2) = 35,000 S.F. MULTI STORY  
17,500 S.F. = (17,500 S.F. X 3) = 52,500 S.F. SINGLE STORY  
PROPOSED ONE STORY GROSS AREA = 31,414 S.F.  
PROPOSED BUILDING MAX. HEIGHT = 14'-6", 19'-6"  
PARKING PER TABLE 11-32-3.A MINI STORAGE = 6  
PARKING PROVIDED = 6 (1 HC)



**ARCHITECTURAL**

**ARC Services Inc.**  
1400 N. SUSSEX PLACE  
Fountain Hills, Arizona 85288  
phone (480)-837-0781  
fax (480)-907-1196

4417  
WILLIAM J. SCHROEDER  
REGISTERED PROFESSIONAL ARCHITECT  
STATE OF ARIZONA  
EXP. 12.31.20

**CONSISTENT OF INSTRUMENTS OF SERVICE**  
All work shall be done in accordance with the City of Mesa rules and regulations and the provisions provided by the International Building Code and the Arizona Building Code. The architect shall be responsible for the design and construction of the project. The architect shall be responsible for the design and construction of the project. The architect shall be responsible for the design and construction of the project.

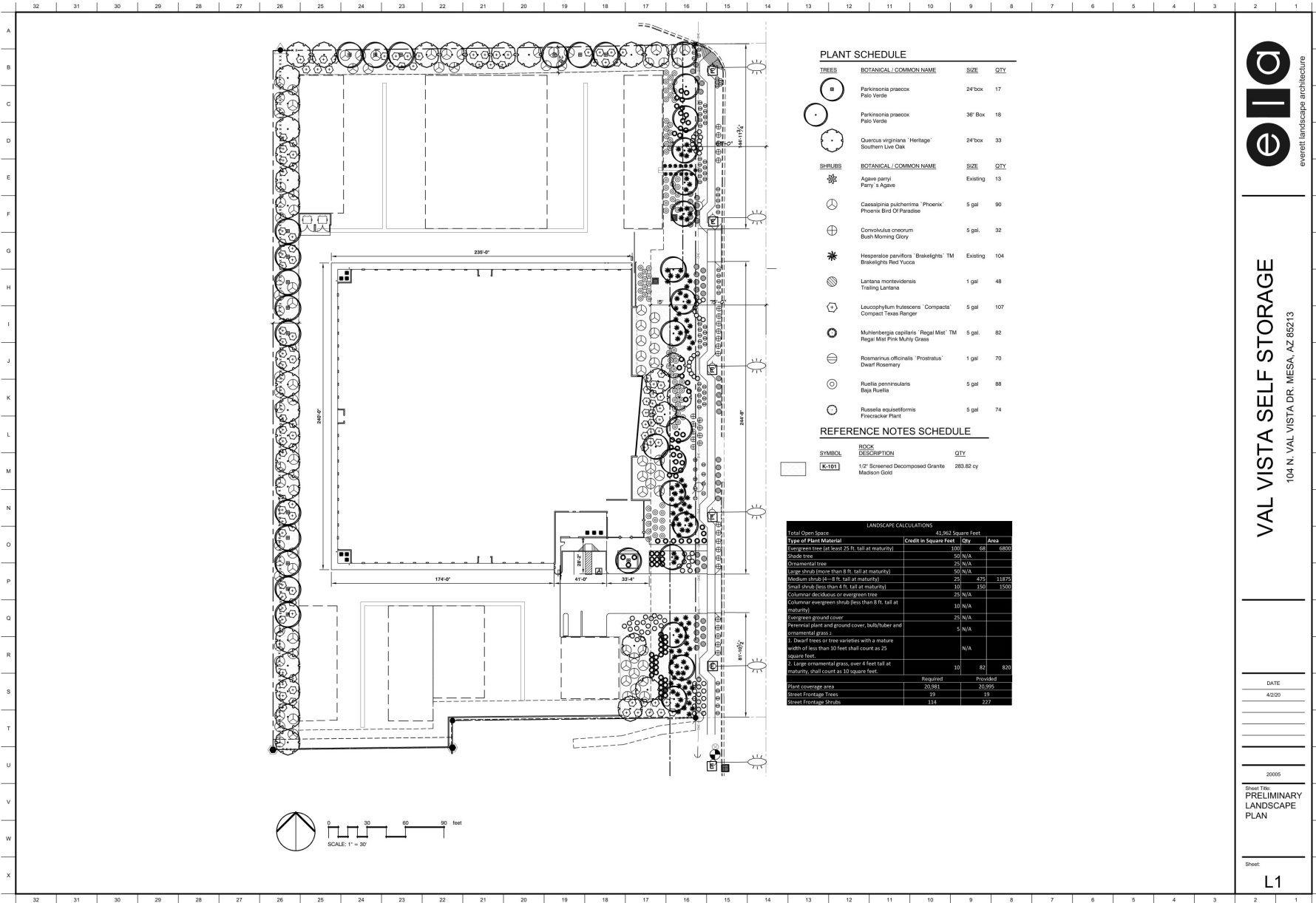
**REVISIONS**

**VAL VISTA SELF STORAGE**  
104 NORTH VAL VISTA DRIVE  
MESA, ARIZONA 85213

**TITLE** SITE PLAN  
**Date** 04/07/2020  
**Project number**  
**Drawn by** RL  
**Checked by** BS  
**CAD file** VV8

Design Development  
 Progress Const. Docs.  
 City Submittal  
 Bid Package  
 Construction Issue  
 Record Drawings

Sheet Number  
**SP1**



**PLANT SCHEDULE**

TREES	BOTANICAL / COMMON NAME	SIZE	QTY
III	Parkinsonia praecox Palo Verde	24"box	17
●	Parkinsonia praecox Palo Verde	36" Box	18
○	Quercus virginiana 'Heritage' Southern Live Oak	24"box	33
SHRUBS	BOTANICAL / COMMON NAME	SIZE	QTY
☼	Agave parryi Fairy Agave	Existing	13
☾	Cassatopia pulcherrima 'Phoenix' Phoenix Bird Of Paradise	5 gal	90
⊕	Convolvulus cneorum Bush Morning Glory	5 gal.	32
✱	Hesperaloe parviflora 'Brakeblights'™ Brakeblights Red Yucca	Existing	104
⊗	Lantana montevicensis Trailing Lantana	1 gal	48
⊕	Leucophyllum frutescens 'Compacta' Compact Texas Ranger	5 gal	107
⊗	Muhlenbergia capillaris 'Regal Mist'™ Regal Mist Pink Munny Grass	5 gal.	82
⊕	Rosmarinus officinalis 'Prostratus' Dwarf Rosemary	1 gal	70
⊕	Ruellia penninularis Baja Ruellia	5 gal	88
⊕	Ruellia equisetiformis Firecracker Plant	5 gal	74

**REFERENCE NOTES SCHEDULE**

SYMBOL	ROOM DESCRIPTION	QTY
□	K-101 1/2" Screened Decomposed Granite Madison Gold	283.82 cy

**LANDSCAPE CALCULATIONS**

Type of Plant Material	Credit in Square Feet	Qty	Area
Total Open Space	41,562 Square Feet		
Evergreen tree (at least 25 ft. tall at maturity)	150	68	4200
Shade tree	50	N/A	
Ornamental tree	25	N/A	
Large shrub (more than 8 ft. tall at maturity)	50	N/A	
Medium shrub (4 – 8 ft. tall at maturity)	25	475	11875
Small shrub (less than 4 ft. tall at maturity)	10	150	1500
Columnar deciduous or evergreen tree	25	N/A	
Columnar evergreen shrub (less than 8 ft. tall at maturity)	10	N/A	
Evergreen ground cover	25	N/A	
Perennial plant and ground cover, bulb/tuber and ornamental grass	5	N/A	
1. Dwarf trees or tree varieties with a mature width of less than 10 feet shall count as 25 square feet		N/A	
2. Large ornamental grass, over 4 feet tall at maturity, shall count as 10 square feet	10	82	820
	Required	Provided	
Plant coverage area	20,981	20,995	
Street Frontage Trees	10	19	
Street Frontage Shrubs	118	222	



**VAL VISTA SELF STORAGE**

104 N. VAL VISTA DR., MESA, AZ 85213

DATE  
4/2/20

2005

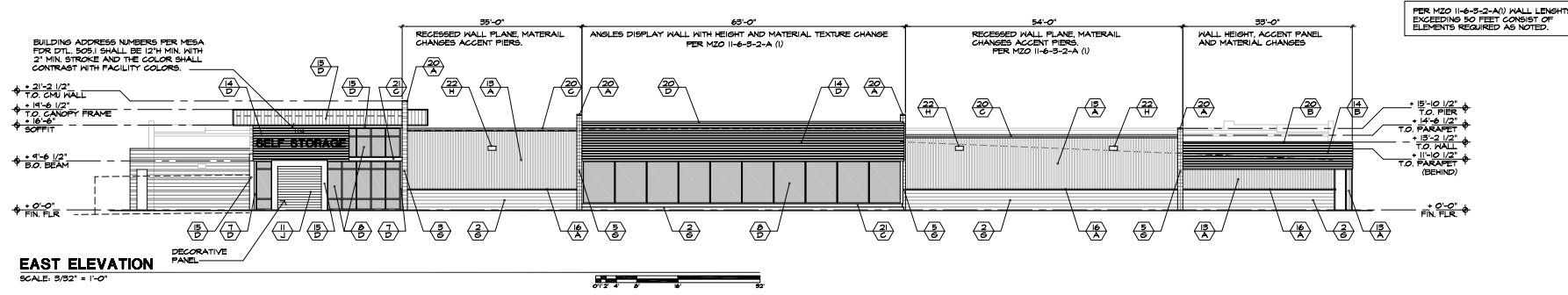
Sheet Title:  
**PRELIMINARY  
LANDSCAPE  
PLAN**

Sheet:  
**L1**

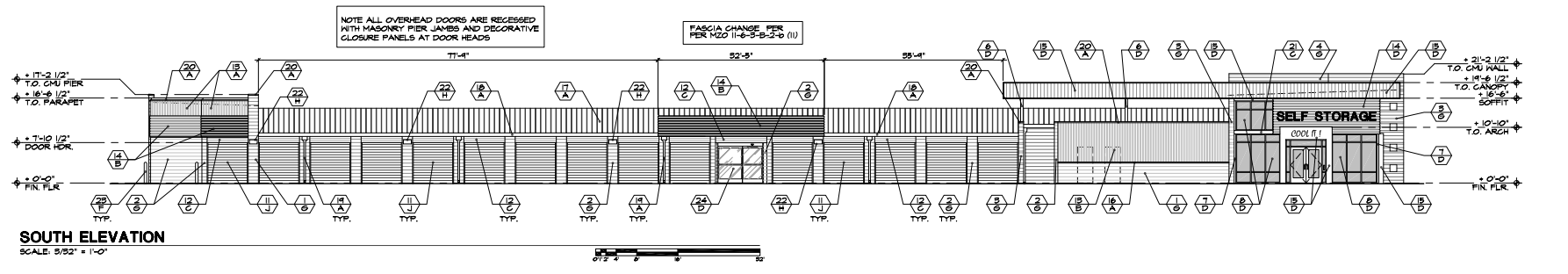
MATERIAL CALCULATIONS
<b>EAST ELEVATION 3,369 S.F.</b>
1. CMU 650 SF. = 15% 2. 'NU-WAVE' SIDING 1,671 SF. = 36% 3. BOX RIB PANEL 531 SF. = 16% 4. FLAT SHEET WALL 119 SF. = 3% 5. GLAZING 900 SF. = 26%

MATERIAL CALCULATIONS
<b>SOUTH ELEVATION 2,618 S.F.</b>
1. CMU 510 SF. = 20% 2. 'NU-WAVE' SIDING 280 SF. = 10% 3. BOX RIB PANEL 1,258 SF. = 48% 4. FLAT SHEET WALL 250 SF. = 9% 5. GLAZING 320 SF. = 13%

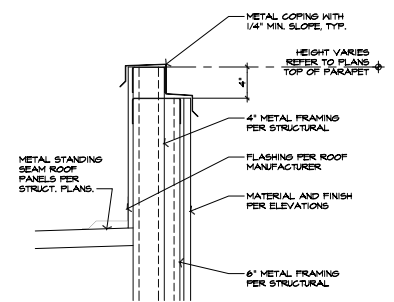
MATERIAL SCHEDULE		MATERIAL COLOR
<b>MATERIALS</b>		
1. 12 x 8 x 16 SMOOTH CMU 2. 8 x 8 x 16 SMOOTH CMU 3. 12x8x16 SMOOTH CMU WALL W/ 12x4x16 CMU ACCENT BANDS 4. 8x8x16 SMOOTH CMU WALL W/ 8x4x16 CMU ACCENT BANDS 5. 12 x 8 x 16 SCORED CMU PIERS 6. 6 x 6 STEEL COLUMN 7. 4 x 4 STEEL COLUMN 8. ALUMINUM FRAMED WINDOW SYSTEM 9. 4'W x 7'H HM DOOR AND FRAME 10. 3'W x 7'H HM DOOR AND FRAME 11. 'JANUS INTERNATIONAL GROUP' METAL ROLL-UP DOOR 12. METAL CLOSURE PANEL	13. 'AEP SPAN' 'NU-WAVE' CORRUGATED METAL SIDING 14. 'AEP SPAN' REVERSED BOX RIB PANEL 15. 'AEP SPAN' FLAT SHEET WALL PANEL 16. 1 1/2 x 2 1/2 METAL TRIM 17. 'AEP SPAN' STANDING SEAM METAL ROOF PANELS 18. CONTINUOUS 4" METAL GUTTER (FACTORY PAINTED) 19. DOWNSPOUT GUTTER 20. METAL CAP FLASHING 21. SKEWED LIGHT GAUGE I-BEAM 22. WALL PACK LIGHT FIXTURE 23. CONCRETE-FILLED STEEL BOLLARD 24. 9'W x 7'H SLIDING DOOR AND FRAME	
<b>COLORS</b>		A. ZINCALUME PLUS B. REGAL WHITE C. REGAL BLUE D. DARK BRONZE E. R/G F. VIN-L-STRIPE YELLOW (DUNN EDWARDS) G. UNFINISHED CLEAR COAT SEAL H. MANUFACTURER FINISH J. ROYAL BLUE (JANUS)
		ALL PAINTS AND FINISHES PER MANUFACTURER



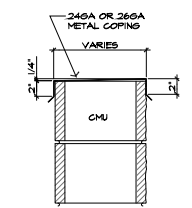
**EAST ELEVATION**  
SCALE: 3/32" = 1'-0"



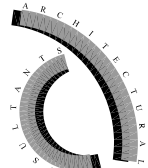
**SOUTH ELEVATION**  
SCALE: 3/32" = 1'-0"



**1 FRAMED PARAPET CAP**  
SCALE: 1/2" = 1'-0"




**2 MASONRY PARAPET CAP**  
SCALE: 1/2" = 1'-0"



**ARC Services Inc.**  
1400 N. SUSSEX PLACE  
Fountain Hills, Arizona 85268

phone (480)-837-0761  
fax (480)-907-1156

secl



4430  
WILLIAM J. SCHROEDER  
REGISTERED PROFESSIONAL ENGINEER  
EXPIRES 12.31.20

**COMPANY OF ENGINEERS OF ARIZONA**  
All work shall be done in accordance with the rules, regulations and standards of the State Board of Engineers and Surveyors of the State of Arizona. The engineer shall be responsible for the design and construction of the project and shall be held responsible for the design and construction of the project and shall be held responsible for the design and construction of the project.

revisions

**VAL VISTA SELF STORAGE**  
104 NORTH VAL VISTA DRIVE  
MESA, ARIZONA 85213

Title: **PRELIMINARY ELEVATIONS**  
Date: **04/07/2020**  
Project number:  
Drawn by: **RL**  
Checked by: **BS**  
CAD file: **VVS**

Design Development  
 Progress Const. Docs.  
 City Submittal  
 Bid Package  
 Construction Issue  
 Record Drawings

Sheet Number:  
**DD1**

**MATERIAL CALCULATIONS**

**WEST ELEVATION 3,053 S.F.**

1. CMU 6" x 8" SF. = 22%
2. 'NU-WAVE' SIDING 1250 SF. = 40%
3. BOX RIB PANEL 1250 SF. = 41%

**MATERIAL CALCULATIONS**

**NORTH ELEVATION 2,553 S.F.**

1. CMU 925 SF. = 36%
2. 'NU-WAVE' SIDING 280 SF. = 11%
3. BOX RIB PANEL 1250 SF. = 49%
4. GLAZING 90 SF. = 4%

**MATERIAL SCHEDULE**

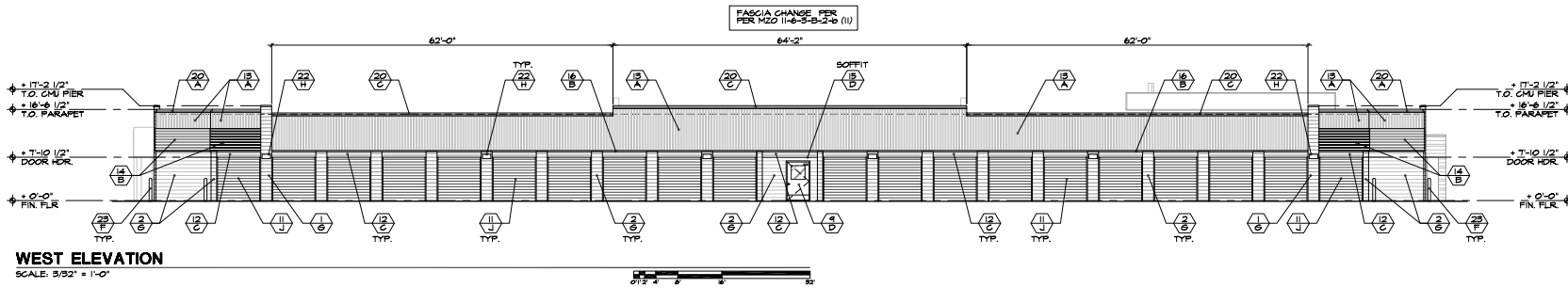
**MATERIALS**

1. 12 x 8 x 16 SMOOTH CMU
2. 8 x 8 x 16 SMOOTH CMU
3. 12x8x16 SMOOTH CMU WALL w/ 12x4x16 CMU ACCENT BANDS
4. 8x8x16 SMOOTH CMU WALL w/ 8x4x16 CMU ACCENT BANDS
5. 12 x 8 x 16 SCORED CMU PIERS
6. 6 x 6 STEEL COLUMN
7. 4 x 4 STEEL COLUMN
8. ALUMINUM FRAMED WINDOW SYSTEM
9. 4'W x 7'H HM DOOR AND FRAME
10. 3'W x 7'H HM DOOR AND FRAME
11. 'JANUS INTERNATIONAL GROUP' METAL ROLL-UP DOOR
12. METAL CLOSURE PANEL
13. 'AEP SPAN' 'NU-WAVE' CORRUGATED METAL SIDING
14. 'AEP SPAN' REVERSED BOX RIB PANEL
15. 'AEP SPAN' FLAT SHEET WALL PANEL
16. 1 1/2 x 2 1/2 METAL TRIM
17. 'AEP SPAN' STANDING BEAM METAL ROOF PANELS
18. CONTINUOUS 4" METAL GUTTER (FACTORY PAINTED)
19. DOWNSPOUT GUTTER
20. METAL CAP FLASHING
21. SKEWED LIGHT GAUGE I-BEAM
22. WALL PACK LIGHT FIXTURE
23. CONCRETE-FILLED STEEL BOLLARD
24. 9'W x 7'H SLIDING DOOR AND FRAME

**COLORS**

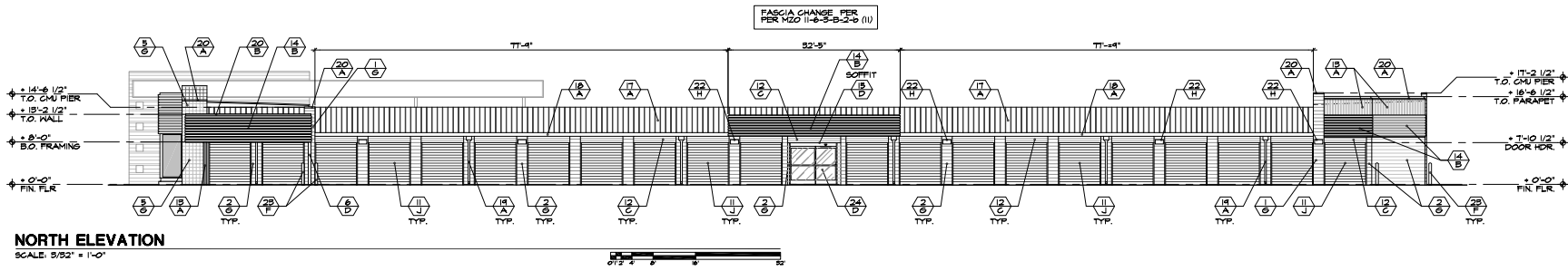
- A. ZINCALUME PLUS
- B. REGAL WHITE
- C. REGAL BLUE
- D. DARK BRONZE
- E. n/a
- F. VIN-L-STRIPE YELLOW (DUNN EDWARDS)
- G. UNFINISHED CLEAR COAT SEAL
- H. MANUFACTURER FINISH
- J. ROYAL BLUE (JANUS)

ALL PAINTS AND FINISHES PER MANUFACTURER



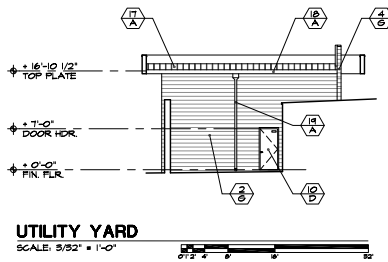
**WEST ELEVATION**

SCALE: 5/32" = 1'-0"



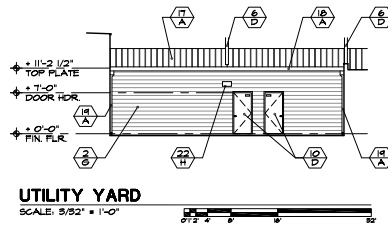
**NORTH ELEVATION**

SCALE: 5/32" = 1'-0"



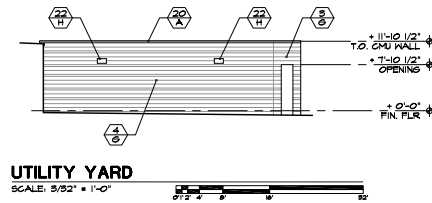
**UTILITY YARD**

SCALE: 5/32" = 1'-0"



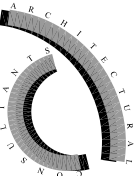
**UTILITY YARD**

SCALE: 5/32" = 1'-0"



**UTILITY YARD**

SCALE: 5/32" = 1'-0"



**ARC Services Inc.**  
 1400 N. SUSSEX PLACE  
 Fountain Hills, Arizona 85228  
 phone (480)-837-0761  
 fax (480)-907-1156



**REVISIONS**

NO.	DATE	DESCRIPTION

**VAL VISTA  
 SELF STORAGE  
 104 NORTH VAL VISTA DRIVE  
 MESA, ARIZONA 85213**

**Title: PRELIMINARY ELEVATIONS**  
**Date: 04/07/2020**  
**Project number:**  
**Drawn by: RL**  
**Checked by: BS**  
**CAD file: VVS**

- Design Development
- Progress Const. Docs.
- City Submittal
- Bid Package
- Construction Issue
- Record Drawings

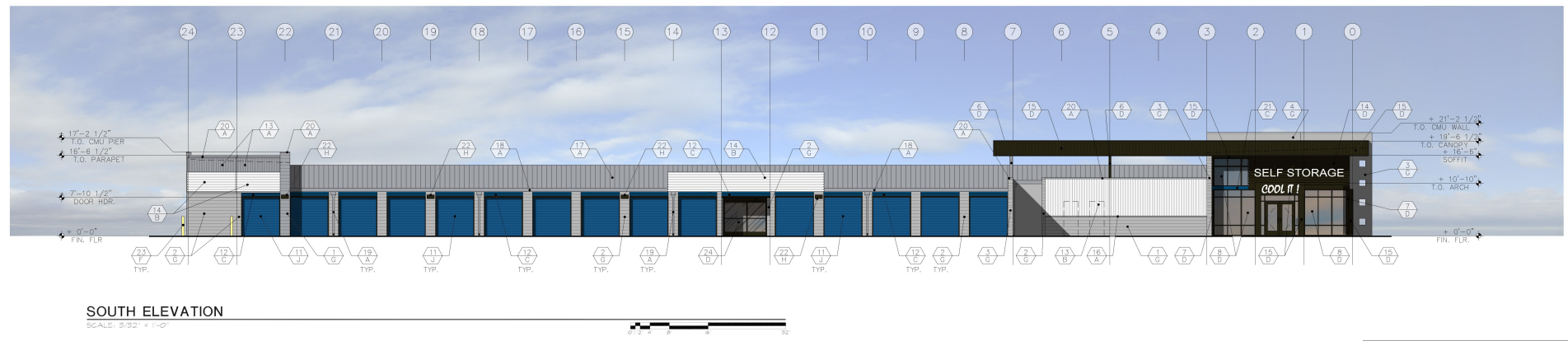
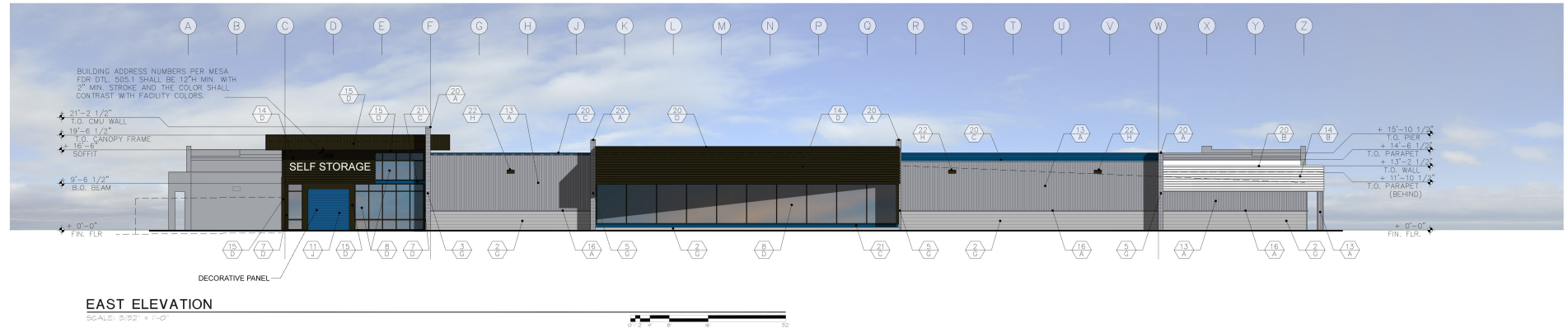
Sheet Number:

**DD2**

MATERIAL CALCULATIONS
<b>EAST ELEVATION 3,369 S.F.</b>
1. CMU 630 SF +15% 2. 'NU-WAVE' SIDING 1167 SF. + 36% 3. BOX RIB PANEL 537 SF. + 16% 4. FLAT SHEET WALL 115 SF. + 3% 5. GLAZING 320 SF. + 26%

MATERIAL CALCULATIONS
<b>SOUTH ELEVATION 2,618 S.F.</b>
1. CMU 310 SF +20% 2. 'NU-WAVE' SIDING 280 SF. + 10% 3. BOX RIB PANEL 1250 SF. + 48% 4. FLAT SHEET WALL 250 SF. + 9% 5. GLAZING 310 SF. + 13%

MATERIAL SCHEDULE		MATERIAL	COLOR
<b>MATERIALS</b>			
1.	12 x 8 x 16 SMOOTH CMU	13.	'AEP SPAN' 'NU-WAVE' CORRUGATED METAL SIDING
2.	8 x 8 x 16 SMOOTH CMU	14.	'AEP SPAN' REVERSED BOX RIB PANEL
3.	12x8x16 SMOOTH CMU WALL W/ 12x4x16 CMU ACCENT BANDS	15.	'AEP SPAN' FLAT SHEET WALL PANEL
4.	8x8x16 SMOOTH CMU WALL W/ 8x4x16 CMU ACCENT BANDS	16.	1 1/2 x 2 1/2 METAL TRIM
5.	12 x 8 x 16 SCORED CMU PIERS	17.	'AEP SPAN' STANDING BEAM METAL ROOF PANELS
6.	6 x 6 STEEL COLUMN	18.	CONTINUOUS 4" METAL GUTTER (FACTORY PAINTED)
7.	4 x 4 STEEL COLUMN	19.	DOWNSPOUT GUTTER
8.	ALUMINUM FRAMED WINDOW SYSTEM	20.	METAL GAP FLASHING
9.	4 1/2 x 7 1/2 HM DOOR AND FRAME	21.	SKELVED LIGHT GAUGE I-BEAM
10.	3 1/2 x 7 1/2 HM DOOR AND FRAME	22.	WALL PACK LIGHT FIXTURE
11.	'JANUS INTERNATIONAL GROUP' METAL ROLL-UP DOOR	23.	CONCRETE-FILLED STEEL BOLLARD
12.	METAL CLOSURE PANEL	24.	9 1/2 x 7 1/2 SLIDING DOOR AND FRAME
<b>COLORS</b>			
A. ZINCALUME PLUS			
B. REGAL WHITE			
C. REGAL BLUE			
D. DARK BRONZE			
E. N/A			
F. VYN-L-STRIP YELLOW ('DUNN EDWARDS')			
G. UNFINISHED CLEAR COAT SEAL			
H. MANUFACTURER FINISH			
J. ROYAL BLUE ('JANUS')			
ALL PAINTS AND FINISHES PER MANUFACTURER			



ARCHITECTURAL  
PLANNING  
DESIGN  
SERVICES  
INC.

ARC Services Inc.  
1410 N. SUSSEX PLACE  
Fountain Hills, Arizona 85268

phone (480)-837-0761  
fax (480)-907-1135

SEAL

**OWNERSHIP OF INSTRUMENTS OF SERVICE**  
All reports, plans, specifications, contract documents, field notes and other documents and instruments prepared by the design professional or in cooperation of another shall remain the property of the design professional. The design professional shall retain complete ownership and control of all instruments of service, including the copyright notice.

revisions

VAL VISTA  
SELF STORAGE  
104 NORTH VAL VISTA DRIVE  
MESA, ARIZONA 85213

Title: PRELIMINARY ELEVATIONS  
Date: 03/26/2020  
Project number:  
Drawn by: RL  
Checked by: BS  
CAD file: VVS

Design Development  
 Progress Const. Docs.  
 City Submittal  
 Bid Package  
 Construction Issue  
 Record Drawings

Sheet Number:

ALL SIGNAGE TO BE BY SEPARATE PERMIT.

DD1

**MATERIAL CALCULATIONS**  
**WEST ELEVATION 3,053 S.F.**

1. CMU 675 SF. + 22%
2. 'NU-WAVE' SIDING 1230 SF. + 40%
3. BOX RIB PANEL 1258 SF. + 4%

**MATERIAL CALCULATIONS**  
**NORTH ELEVATION 2,553 S.F.**

1. CMU 925 SF. + 36%
2. 'NU-WAVE' SIDING 280 SF. + 1%
3. BOX RIB PANEL 1258 SF. + 4%
4. GLAZING 30 SF. + 4%

**MATERIAL SCHEDULE** MATERIAL COLOR

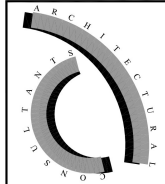
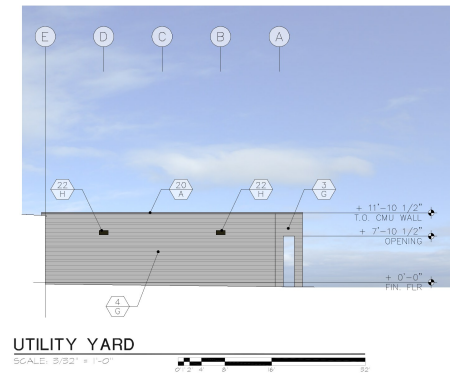
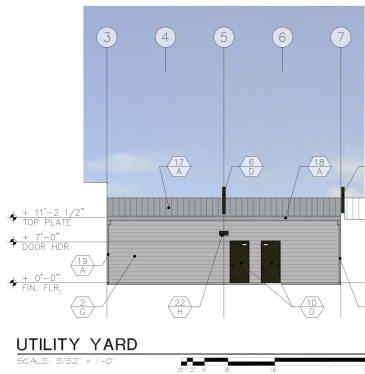
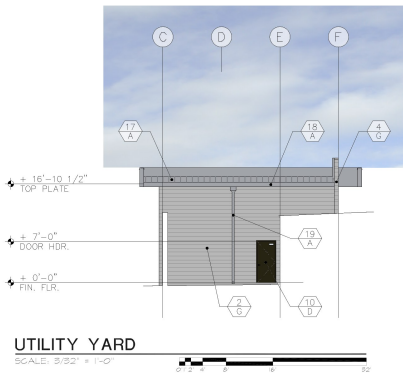
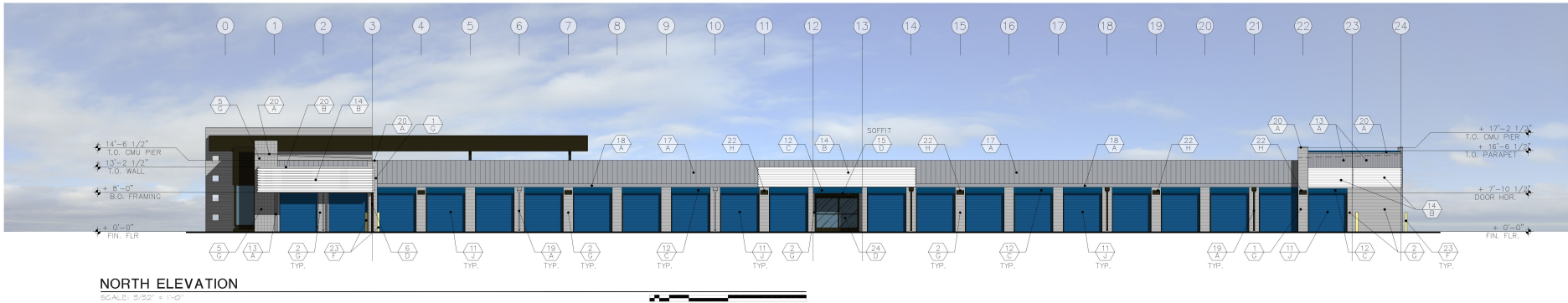
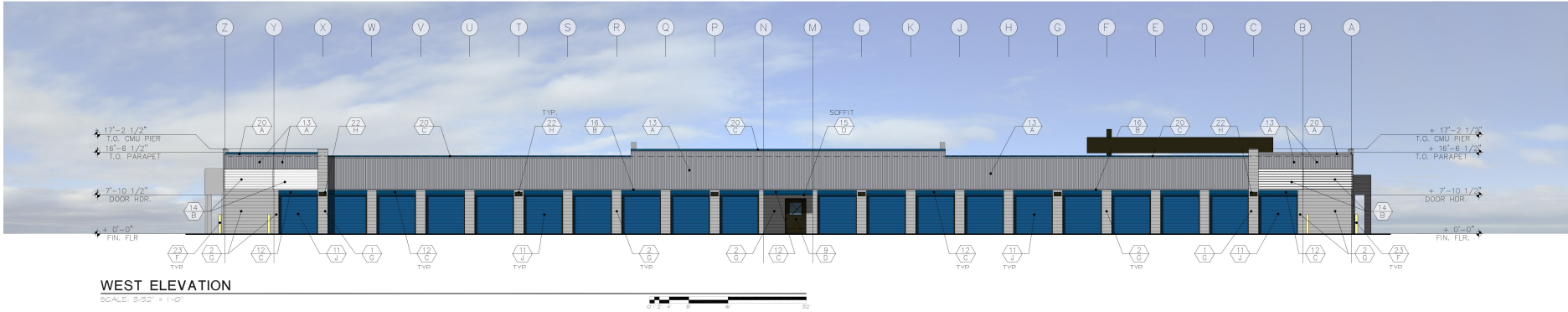
**MATERIALS**

1. 12 x 8 x 16 SMOOTH CMU
2. 8 x 8 x 16 SMOOTH CMU
3. 12x8x16 SMOOTH CMU WALL W/ 12x4x16 CMU ACCENT BANDS
4. 8x8x16 SMOOTH CMU WALL W/ 8x4x16 CMU ACCENT BANDS
5. 12 x 8 x 16 SCORED CMU PIERS
6. 6 x 4 STEEL COLUMN
7. 4 x 4 STEEL COLUMN
8. ALUMINUM FRAMED WINDOW SYSTEM
9. 4'W x 7'H HM DOOR AND FRAME
10. 3'W x 7'H HM DOOR AND FRAME
11. JANUS INTERNATIONAL GROUP METAL ROLL-UP DOOR
12. METAL CLOSURE PANEL
13. 'AEP SPAN' 'NU-WAVE' CORRUGATED METAL SIDING
14. 'AEP SPAN' REVERSED BOX RIB PANEL
15. 'AEP SPAN' FLAT SHEET WALL PANEL
16. 1 1/2 x 2 1/2 METAL TRIM
17. 'AEP SPAN' STANDING BEAM METAL ROOF PANELS
18. CONTINUOUS 4" METAL GUTTER (FACTORY PAINTED)
19. DOWNSPOUT GUTTER
20. METAL CAP FLASHING
21. SKELED LIGHT GAUGE I-BEAM
22. WALL PACK LIGHT FIXTURE
23. CONCRETE-FILLED STEEL BOLLARD
24. 9'W x 7'H SLIDING DOOR AND FRAME

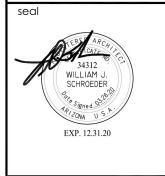
**COLORS**

- A. ZINGALUME PLUS
- B. REGAL WHITE
- C. REGAL BLUE
- D. DARK BRONZE
- E. R/G
- F. VIN-L-STRIP YELLOW (DUNN EDWARDS)
- G. UNFINISHED CLEAR COAT SEAL
- H. MANUFACTURER FINISH
- J. ROYAL BLUE (JANUS)

ALL PAINTS AND FINISHES PER MANUFACTURER



**ARC Services Inc.**  
14010 N. SUSSEX PLACE  
Fountain Hills, Arizona 85268  
phone (480)-837-0761  
fax (480)-907-1155



**CONSULTANT'S INSTRUCTIONS TO SERVICE**  
The design professional's services are limited to the specific tasks and other documents and instruments provided for the design professional's services of service. The design professional shall accept no responsibility for any other documents or instruments not provided for the design professional's services.

**revisions**

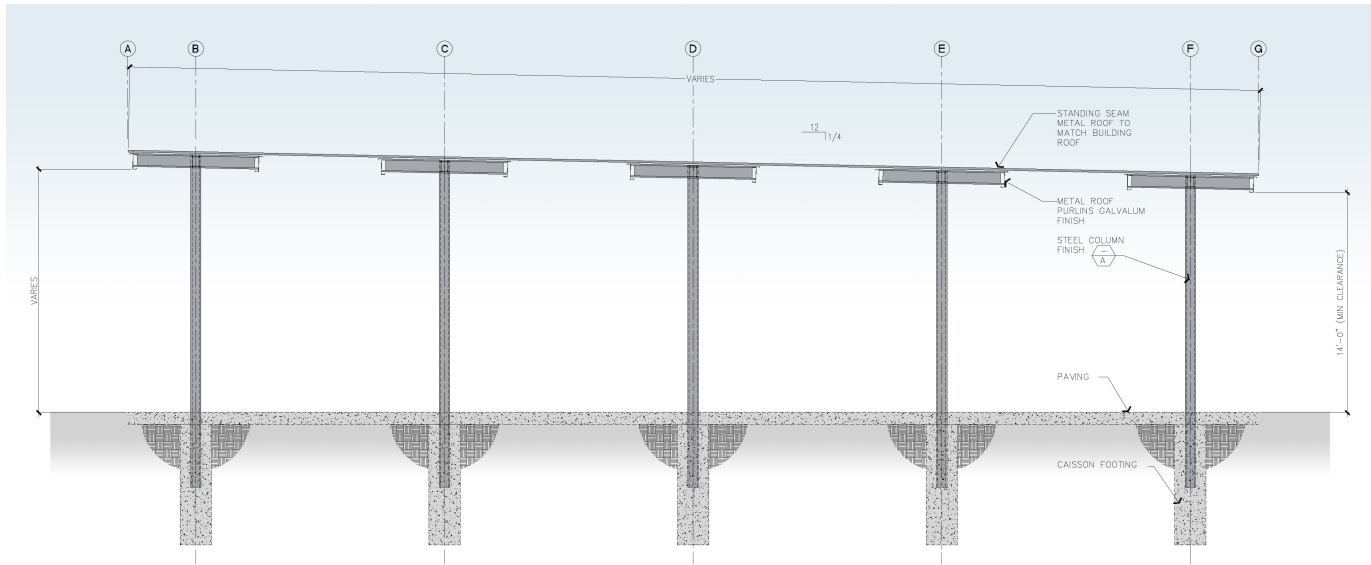
**VAL VISTA SELF STORAGE**  
104 NORTH VAL VISTA DRIVE  
MESA, ARIZONA 85213

Title: **PRELIMINARY ELEVATIONS**  
Date: **03/26/2020**  
Project number:  
Drawn by: **RL**  
Checked by: **BS**  
CAD file: **VVS**

Design Development  
 Progress Const. Docs.  
 City Submittal  
 Bid Package  
 Construction Issue  
 Record Drawings

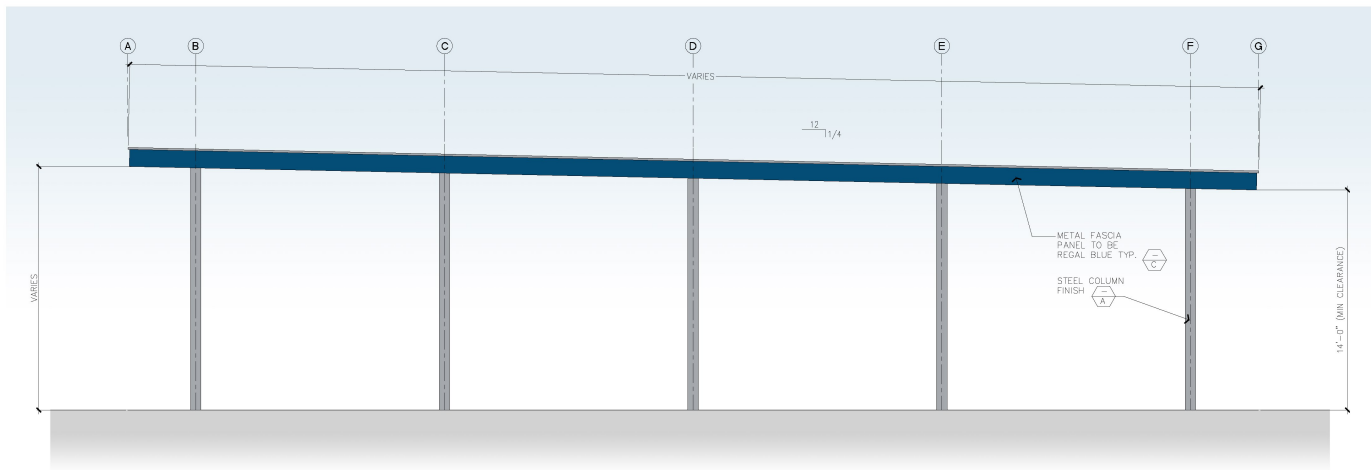
Sheet Number:  
**DD2**





CANOPY SECTION

SCALE: 1/4" = 1'-0"



CANOPY ELEVATION

SCALE: 1/4" = 1'-0"



ARC Services Inc.  
14010 N. SUSSEX PLACE  
Fountain Hills, Arizona 85268  
phone (480)-837-0761  
fax (480)-907-1135

seal



OWNERSHIP OF INSTRUMENTS OF SERVICE  
All reports, plans, specifications, contracts, bills, bid lists, notes and other documents and instruments prepared by the design professional as a result of contract shall remain the property of the design professional. This design professional shall accept no responsibility for any other person's modifications, including the copyright owner.

revisions

**VAL VISTA  
SELF STORAGE  
104 NORTH VAL VISTA DRIVE  
MESA, ARIZONA 85213**

Title: RV CANOPIES

Date: 03/26/2020

Project number:

Drawn by: RL

Checked by: BS

CAD file: VVS

- Design Development
- Progress Const. Docs.
- City Submittal
- Bid Package
- Construction Issue
- Record Drawings

Sheet Number:

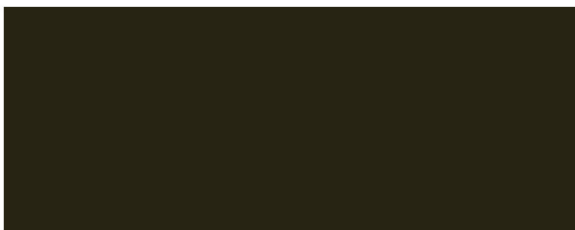
**DD3**



**AEP SPAN  
ZINCALUME PLUS**



**JANUS INTERNATIONAL  
REGAL BLUE**



**AEP SPAN  
DARK BRONZE**



**JANUS INTERNATIONAL  
ROYAL BLUE**



**DUNN EDWARDS  
VIN-L-STRIPE YELLOW**

**COLOR/MATERIAL PALETTE**

**VAL VISTA SELF STORAGE  
104 NORTH VAL VISTA DRIVE  
MESA, ARIZONA**



**ARC Services Inc.  
14010 N. SUSSEX PLACE  
Fountain Hills, Arizona 85268**



(conceptual colors)



(galvalume corrugated metal wall siding)



(scored cmu walls)



(louver wall siding)



(smooth cmu walls)



(B-deck wall siding)

## VAL VISTA AND MAIN MINI STORAGE MATERIAL PALLET



# WSTM LED

## LED Mini Wall Sconce



Catalog Number
Notes
Type

Hit the Tab key or mouse over the page to see all interactive elements.

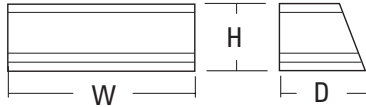
### Introduction

The Architectural WSTM Mini-Wall Sconce is now available with the latest in LED technology. The result is a long-life, maintenance-free product with typical energy savings of 87% over metal halide versions. The diffuse lens eliminates harsh glare while producing comfortable illumination. The WSTM LED is ideal for replacing existing 50-100W metal halide or 26-42W compact fluorescent wall-mounted products and can be mounted in either lens up or lens down orientation. The expected service life is over 10 years of nighttime use.

### Specifications

#### Luminaire

- Height:** 5-3/4" (14.6 cm)
- Width:** 12-1/2" (31.8 cm)
- Depth:** 7-1/2" (19.1 cm)
- Weight:** 6 lbs. (2.7 kg)



### Ordering Information

**EXAMPLE:** WSTM LED 2A 40K 120 DDBTXD

WSTM LED	Series	LEDs	Color temperature	Voltage	Mounting	Control options	Other options	Finish <i>(required)</i>
	WSTM LED	1A One engine 2A Two engines	30K 3000K 40K 4000K	120 277 <sup>1</sup>	<b>Shipped included</b> (blank) Surface mount <b>Shipped separately</b> <sup>2</sup> UT5 Uptilt 5 degrees	<b>Shipped installed</b> PE Photoelectric cell, button type	<b>Shipped installed</b> (blank) Diffusing glass lens CGL Clear glass lens <b>Shipped separately</b> <sup>2</sup> WG Wire guard <sup>3</sup>	DDBXD Dark bronze DBLXD Black DNAXD Natural aluminum DWHXD White DDBTXD Textured dark bronze DBLBXD Textured black DNATXD Textured natural aluminum DWHGXD Textured white DSSTXD Textured sandstone

Stock configurations are offered for shorter lead times:

Stock Part Number
WSTM LED 1A 40K 120 DDBTXD
WSTM LED 2A 40K 120 DDBTXD

### Accessories

Ordered and shipped separately.

WSTMUT5 DDBXD U	5 degree uptilt accessory (specify finish)
WSTMWG U	Wire guard accessory

### NOTES

- Includes step-down transformer; see page 2 for more information.
- Also available as a separate accessory; see Accessories information at left.
- Not for inverted mounting.



## Performance Data

### Lumen Output

Lumen values are from photometric tests performed in accordance with IESNA LM-79-08. Data is considered to be representative of the configurations shown, within the tolerances allowed by Lighting Facts.

LEDs	Performance Package	System Watts <sup>1</sup>	30K (3000K, 80 CRI)					40K (4000K, 80 CRI)				
			Nominal Lumens	B	U	G	LPW	Nominal Lumens	B	U	G	LPW
1A	1A --K	9	673	0	0	0	75	733	0	0	1	81
2A	2A --K	17	1,308	1	0	0	77	1,277	1	0	0	75

1 See electrical load chart for 277V system watts.

### Lumen Ambient Temperature (LAT) Multipliers

Use these factors to determine relative lumen output for average ambient temperatures from 0-40°C (32-104°F).

Ambient	Lumen Multiplier	
0°C	32°F	1.05
10°C	50°F	1.03
20°C	68°F	1.01
<b>25°C</b>	<b>77°F</b>	<b>1.00</b>
30°C	86°F	0.99
40°C	104°F	0.97

### Projected LED Lumen Maintenance

Data references the extrapolated performance projections for the **WSTM LED** platform in a **25°C ambient**, based on 10,000 hours of LED testing (tested per IESNA LM-80-08 and projected per IESNA TM-21-11).

To calculate LLF, use the lumen maintenance factor that corresponds to the desired number of operating hours below. For other lumen maintenance values, contact factory.

Operating Hours	0	25,000	50,000	100,000
Lumen Maintenance Factor	1.0	0.86	0.74	0.54

### Electrical Load

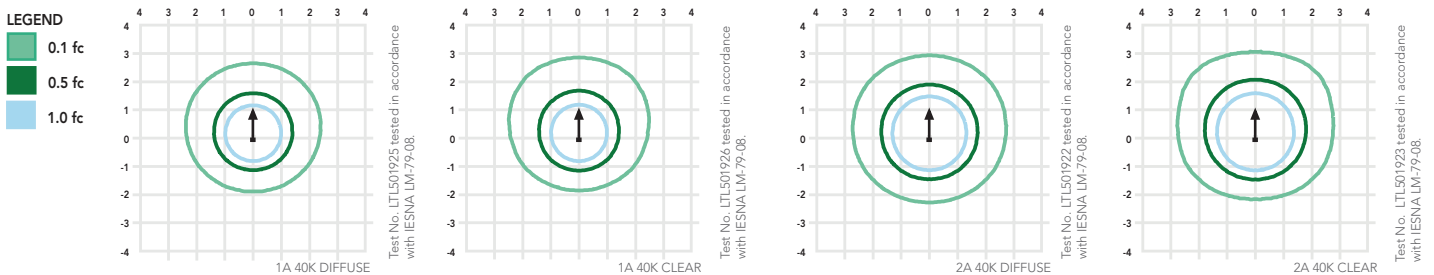
LEDs	System Watts	Current (A)	
		120	277
1A	9W	0.08	—
	13W <sup>1</sup>	—	0.06
2A	17W	0.15	—
	22W <sup>1</sup>	—	0.09

1 Higher wattage is due to electrical losses from step-down transformer.

## Photometric Diagrams

To see complete photometric reports or download .ies files for this product, visit Lithonia Lighting's [WSTM LED homepage](#).

Isofootcandle plots for the WSTM LED 40K. Distances are in units of mounting height (8').



## FEATURES & SPECIFICATIONS

### INTENDED USE

The classic architectural shape of the WSTM LED was designed for applications such as hospitals, schools, malls, restaurants, and commercial buildings. The long-life LEDs make this luminaire nearly maintenance-free.

### CONSTRUCTION

The single-piece die-cast aluminum housing integrates a heat sink to optimize thermal transfer from the internal light engine and promote long life. The die-cast door frame is fully gasketed with a one-piece solid silicone gasket to keep out moisture and dust, providing an IP65 rating for the luminaire.

### FINISH

Exterior parts are protected by a zinc-infused Super Durable TGIC thermoset powder-coat finish that provides superior resistance to corrosion and weathering. A tightly controlled multi-stage process ensures a minimum 3 mils thickness for a finish that can withstand extreme climate changes without cracking or peeling. Standard Super Durable colors include dark bronze, black, natural aluminum, sandstone and white. Available in textured and non-textured finishes.

### OPTICS

Light engines are 3000K (>80 CRI) or 4000K (>80 CRI). The WSTM LED has zero uplight and qualifies as a Nighttime Friendly™ product, meaning it is consistent with the LEED® and Green Globes™ criteria for eliminating wasteful uplight.

### ELECTRICAL

Light engine(s) consist of 42 high-efficacy LEDs mounted to a circuit board and integral aluminum heat sink to maximize heat dissipation and promote long life (50,000 hrs at 25°C, L74).

### INSTALLATION

Easily installed using provided mounting strap. Mount to any non-combustible vertical surface, over a 4" round or square recessed outlet box (by others). Back access through slotted gasket.

### LISTINGS

CSA certified to U.S. standards. Luminaire is IP65 rated and suitable for wet locations when mounted with the lens cover. Rated for -30°C minimum ambient.

DesignLights Consortium® (DLC) qualified product. Not all versions of this product may be DLC qualified. Please check the DLC Qualified Products List at [www.designlights.org](http://www.designlights.org) to confirm which versions are qualified.

### WARRANTY

Five-year limited warranty. Complete warranty terms located at

[www.acuitybrands.com/CustomerResources/Terms\\_and\\_conditions.aspx](http://www.acuitybrands.com/CustomerResources/Terms_and_conditions.aspx).

Actual performance may differ as a result of end-user environment and application.

All values are design or typical values, measured under laboratory conditions at 25 °C.

**Note:** Specifications subject to change without notice.

